



# National Walking and Cycling Participation Survey 2023

Victoria



Revision	Date issued	Author	Revision type
1	5/06/2023	C. Munro	Issue-1

<b>Printed:</b>	5 June 2023
<b>Last saved:</b>	5 June 2023 10:38 PM
<b>File name:</b>	NWCPS Vic (2023).docx
<b>Project manager:</b>	C. Munro
<b>Name of organisation:</b>	Department of Transport and Planning
<b>Name of project:</b>	National Walking and Cycling Participation Survey
<b>Project number:</b>	0187

# Contents

<b>1</b>	<b>Introduction .....</b>	<b>1</b>
1.1	Background.....	1
1.2	Sampling frame.....	1
1.3	Survey method.....	1
1.4	Survey design .....	1
1.5	Weighting .....	2
1.6	Statistical significance.....	2
1.7	Survey sample .....	2
1.8	Definitions .....	3
<b>2</b>	<b>Walking .....</b>	<b>4</b>
2.1	Participation .....	4
2.2	Purpose .....	5
2.3	Frequency and duration.....	6
<b>3</b>	<b>Cycling .....</b>	<b>8</b>
3.1	Participation .....	8
3.2	Purpose .....	17
3.3	Perceptions towards cycling .....	18
3.4	Bicycle ownership .....	19
<b>4</b>	<b>Rideables .....</b>	<b>21</b>
	<b>Appendix A: Data Tables.....</b>	<b>22</b>
	<b>Appendix B: Survey Script.....</b>	<b>26</b>

# 1 Introduction

## 1.1 Background

The National Walking and Cycling Participation Survey (NWCPS) provides insight into walking and cycling activity across Australia. The survey provides data on walking and cycling participation at a national and state or territory level and within each state or territory divided between capital city and regional (non-capital city) areas. The survey replaces the National Cycling Participation Survey, a predecessor cycling-specific survey that was undertaken nationally biennially since 2011.

## 1.2 Sampling frame

The survey is administered as a telephone survey of residents of the study area using both landline and mobile telephone numbers. The sample consisted of a commercial database of landline and mobile telephone numbers with locality information. Numbers were drawn randomly and were dialled at least two times at different times of day and days of week before exhaustion. Where no contact was made to mobile numbers after the first call a text message was sent describing the purpose of the call and encouraging the respondent to call or text the fieldwork office to arrange a suitable time for the interview. Messages were left on answering machines inviting respondents to call back at a convenient time. Non-residential numbers were screened out from the interview.

Individuals of all ages who had been resident in the household for at least the past 90 days were considered in scope for the survey. The main respondent, in accordance with market research guidelines, had to be aged 15 or older.

In each state the sample was divided between residents located in the capital city metropolitan area as defined by the Australian Bureau of Statistics (ABS) as the Greater Capital City Statistical Area (GCCSA) and the remainder. Interviewer hours were allocated to each the GCCSA and non-GCCSA areas in proportion to the estimated resident population in each of the two areas in each state.

## 1.3 Survey method

Given that walking and cycling activity are likely to be affected by seasonal variability and weather the survey fieldwork was conducted between March and May 2023, with interviews spread out over a period of several weeks to minimise the effect of local, short periods of unseasonal weather.

The main respondent, aged 15 or older, was asked to respond on behalf of all household members. In this way more complete coverage of the population was obtained, including of children, in a cost-effective manner. However, this did require respondents to have a reasonable understanding of the travel patterns of other household members and is likely to come at the expense of some accuracy.

## 1.4 Survey design

Respondents to the survey are asked how recently they have walked or ridden a bicycle, the purposes for doing so and their perceptions towards these activities for both transport and recreation. The survey asked respondents to recollect when they last walked for at least ten minutes outside their home, excluding gardening, and when they last rode a bicycle (including e-bicycles, but excluding stationary exercise bicycles) in any location. Those respondents who had done so in the past week were asked to recall on how many days and for how long they had walked or ridden. The retrospective approach, while cost effective, may not precisely measure the activity duration in particular. Moreover, to avoid recollection and definitional issues respondents were not asked how many trips they had undertaken by walking or riding.

## 1.5 Weighting

The person-level data are weighted at the gender and age level (2 – 9, 10 – 24, 25 – 49, 50+) to the ABS Census of Population and Housing 2021 population for capital city and regional areas. The household-level data are weighted to ABS census 2021 household size (1, 2, 3, 4, 5, 6+ usual residents). The number of persons walking and cycling is estimated by expanding the 2021 weights to estimated resident population for 30 April 2023 provided by the ABS.

## 1.6 Statistical significance

All estimates presented in this report are subject to sampling variability as only a proportion of residents were interviewed. The approach adopted to represent this variability is to either (a) show the 95% confidence intervals on graphs, or (b) identify estimates where the relative standard error (RSE) exceeds 25% (denoted by a \*) and exceeds 50% (denoted by \*\*). Larger RSEs imply lower accuracy. As such, estimates denoted with a \* should be treated with caution and those denoted with \*\* should be considered unreliable.

The 95% confidence interval represents the range within which we would expect the true population estimate to reside 95% of the time should the survey be repeated numerous times. Significant differences between parameters are present where the point estimate falls outside the confidence interval of a comparison parameter.

## 1.7 Survey sample

The sample consisted of 282 households containing 677 individuals. Of this sample 196 households were in Melbourne and 86 were in regional areas. Summary call statistics are provided in Table 1.1. The overall response rate (i.e. completions as a proportion of all in-scope numbers called) was 11.3% and the consent rate (i.e. completions as a proportion of all respondents asked to complete the survey) was 56.9%. Interviews where the main respondent refused to provide their gender, age or number of residents in their household were removed from the sample used in the analysis.

■ Table 1.1: Call statistics<sup>1</sup>

Category	Calls
<b>Surveys</b>	
Completed interviews	291
<b>In scope</b>	
Refusal	1,463
Communication difficulties	111
Terminated early	10
Surplus call backs	474
No contact	1,463
<b>Out of scope</b>	
Non-qualifying <sup>1</sup>	23
<b>Consent rate</b>	<b>56.9%</b>
<b>Response rate</b>	<b>11.3%</b>

<sup>1</sup> Usually wrong area, government or business number.

<sup>1</sup> These statistics apply prior to post-processing, whereafter a small number of records were removed from the final dataset.

## 1.8 Definitions

In this report *walking* is defined as travel by foot or using a mobility aid (e.g. wheelchair or mobility scooter) for at least ten minutes duration outside the home. Physical activities such as gardening are excluded but walking to public transport (if over ten minutes) or within a shopping centre or supermarket (if over ten minutes) is included.

*Bicycle riding* is defined as riding a bicycle for any purpose, of any duration in any location outside; this may include entirely on private property such as in a backyard. The definition of a bicycle includes any device with two or more wheels that can be pedalled, including children's bicycles, tricycles and electrically assisted bicycles (e-bicycles). Stationary exercise bicycles and motorised devices that require a licence such as mopeds and motorcycles are excluded.

## 2 Walking

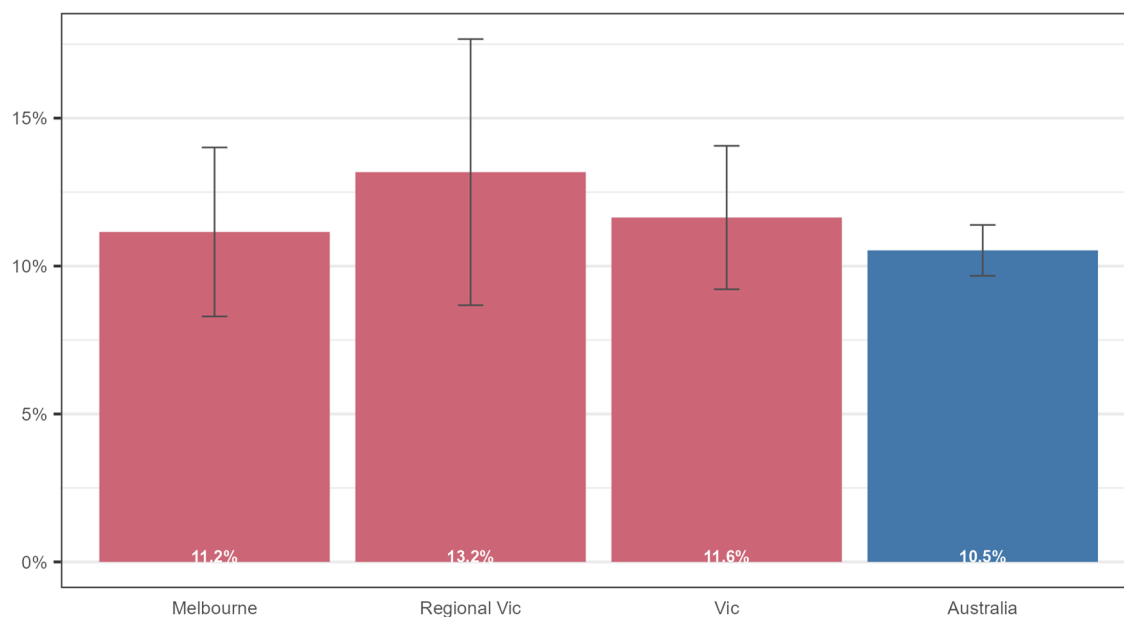
### 2.1 Participation

Walking was defined as:

- travel by foot or using a mobility aid such as a wheelchair or mobility scooter that occurred outside the home, and
- a duration of at least ten minutes.

By this definition walking within the home (including on a treadmill), or very short distances such as from the home to a parked car, are excluded. Physical activities such as gardening were also excluded on the basis that they are unlikely to include ten minutes of continuous walking. It was assumed that children under two years of age had not walked for ten minutes, and that lying or sitting in a bassinet or stroller does not constitute walking. Most other forms of walking are included – such as walking for recreation, walking to shops, public transport, or a workplace, walking to escort others (such as an adult escorting a schoolchild, or pushing a pram) or driving to a shopping centre and then walking within that shopping centre for at least ten minutes.

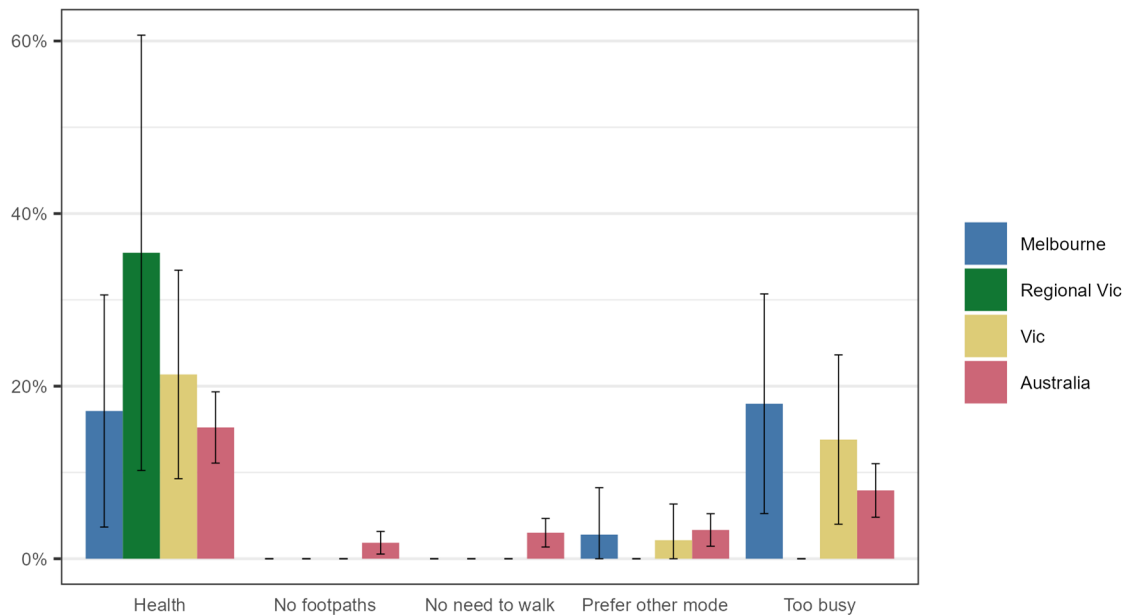
The majority of the population walk or use a mobility aid at least once in a typical week for ten minutes or more outside their home; in Melbourne it is estimated that only 11.2% (95% CI: 8.3% - 14.0%) do not walk in a typical week compared with 13.2% (95% CI: 8.7% - 17.7%) in regional areas (Figure 2.1).



*Error bars are 95% confidence intervals  
Sample: All persons*

■ **Figure 2.1: Proportion of residents who have not walked in the past week**

Of the few individuals who did not walk in the past week, most did not walk for health reasons (21.4%, 95% CI: 9.3% - 33.4%) (Figure 2.2).

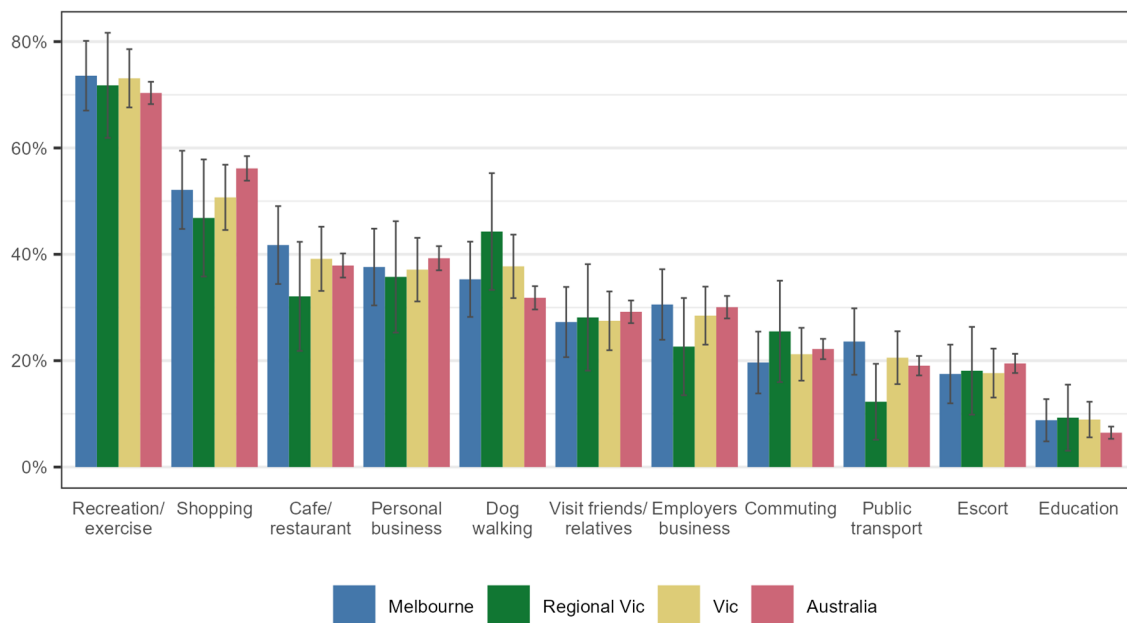


Error bars are 95% confidence intervals  
 Sample: respondents aged 15+ who have not walked for at least 5 minutes in the past 7 days

■ Figure 2.2: Reasons for not walking

## 2.2 Purpose

Among those who walk in a typical week 73.1% (95% CI: 67.6% - 78.6%) in Victoria do so for recreation or exercise, followed by shopping (50.7%, 95% CI: 44.6% – 56.8%) and travel to a café or restaurant (39.2%, 95% CI: 33.1% – 45.2%) (Figure 2.3).



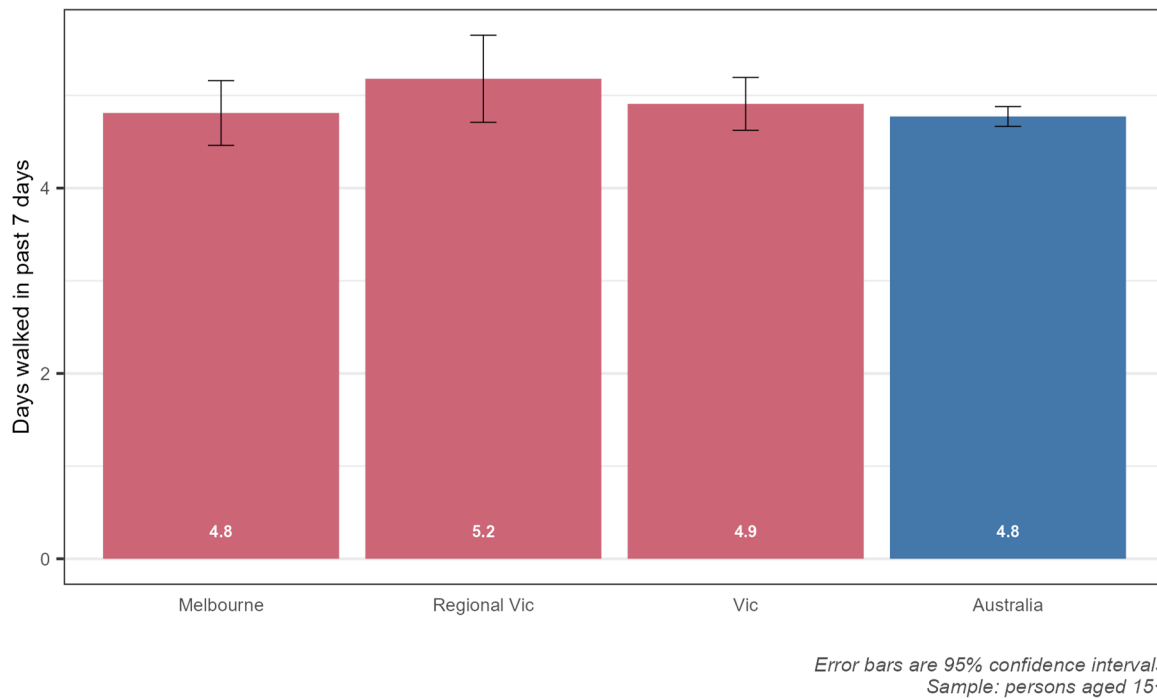
Error bars are 95% confidence intervals  
 Sample: persons aged 15+ who have walked for at least 5 minutes in the past 7 days

■ Figure 2.3: Walking purposes over past month



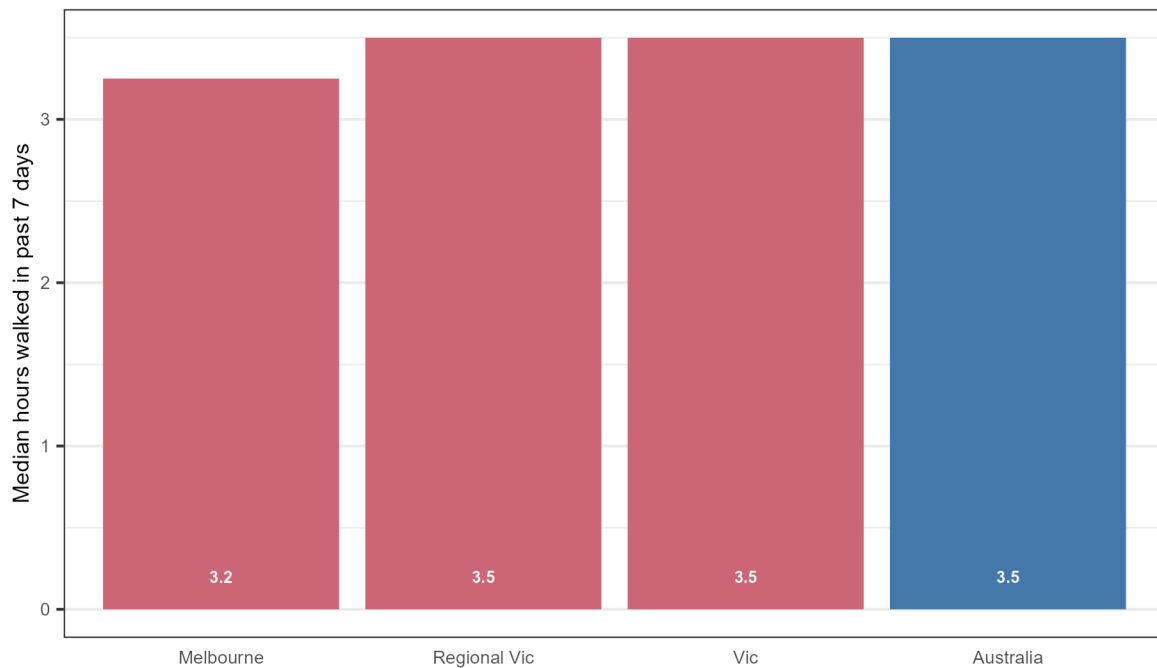
### 2.3 Frequency and duration

The average number of days on which respondents aged 15 and over walked in Victoria was 4.9 days (95% CI: 4.6 – 5.2) over the previous 7 days.



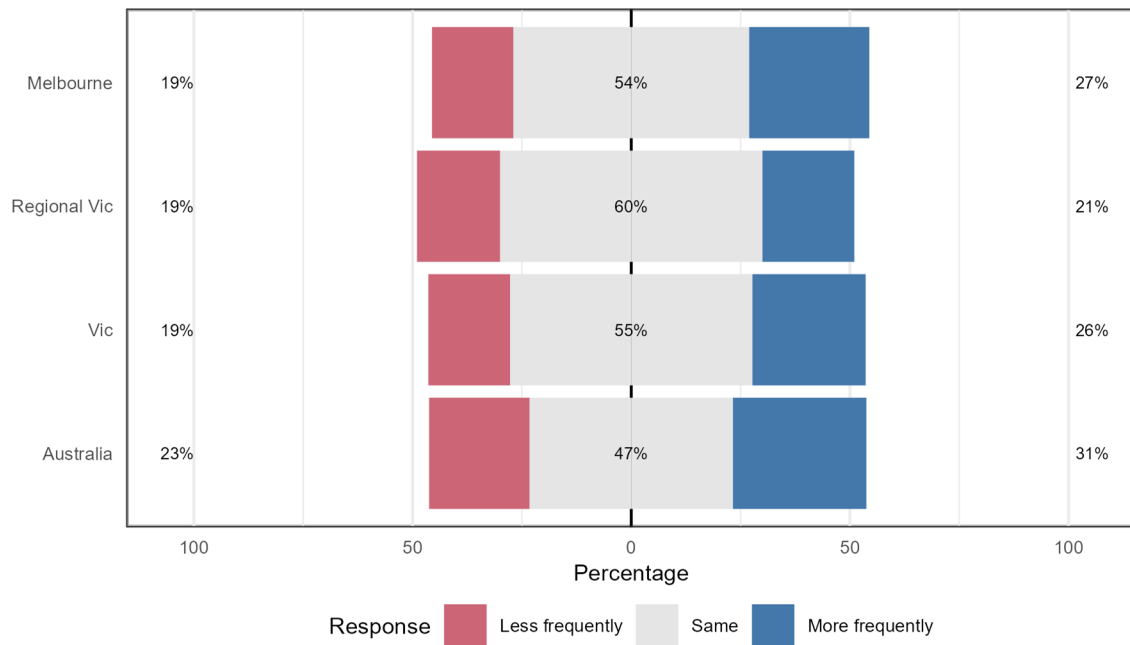
■ **Figure 2.4: Days walked in past 7 days**

Among those aged 15 and over, the median hours walked in the previous 7 days in Victoria was 3.5 hours (95% CI: 3.5 – 4.0) (Figure 2.5).



■ **Figure 2.5: Hours walked in past 7 days**

Among those aged 15 and over who had walked in the past week a larger proportion of residents (25.9%, 95% CI: 19.5% – 32.3%) of Victoria had walked more often than less often (18.7%, 95% CI: 14.5% - 22.9%) compared to a year ago (Figure 2.6).



Sample: Persons aged 15+ who had walked in the past 7 days

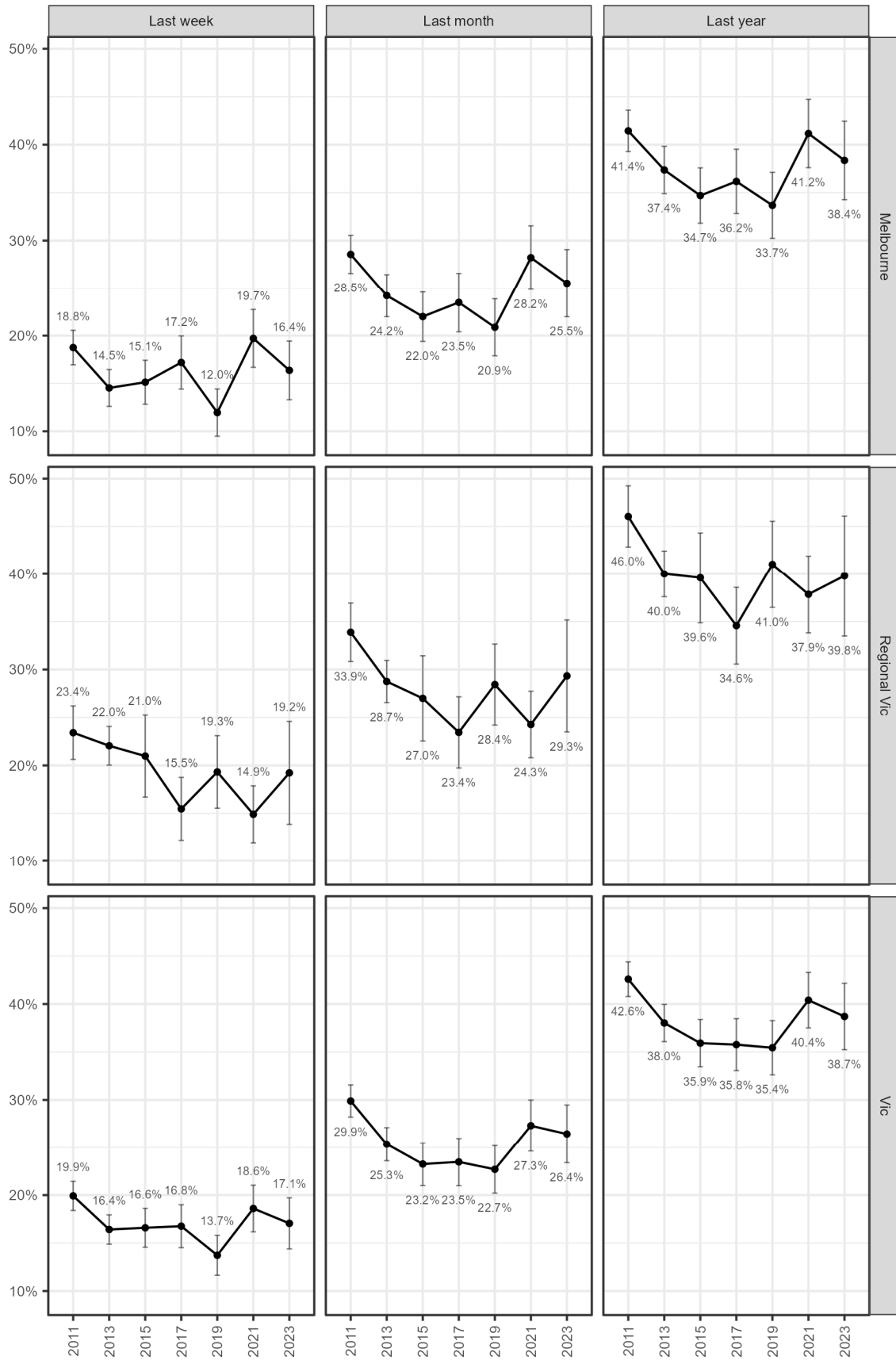
■ Figure 2.6: Change in walking frequency compared to a year ago

## 3 Cycling

### 3.1 Participation

Cycling participation was defined as riding a bicycle for any purpose in any location outside (including a backyard or on a farm) and for any duration. The definition of a bicycle included any device with two or more wheels that can be pedalled. This includes children's bicycles with training wheels, pedal tricycles and quadricycles, cargo bicycles and electrically assisted bicycles (e-bicycles). It excludes devices such as children's tricycles or kick or balance bicycles that lack pedals, scooters, stationary exercise bicycles (or riding indoors using a conventional bicycle on a trainer or rollers) and motorised devices that require a licence such as mopeds or motorcycles. Where a bicycle could accommodate one or more passengers, such as children's seats and trailers, the passenger was not considered to be riding unless they could actively contribute to the propulsion. By this definition, for a tandem bicycle both individuals were defined as having ridden but where an adult was riding with a child in a trailer only the adult was considered to be riding.

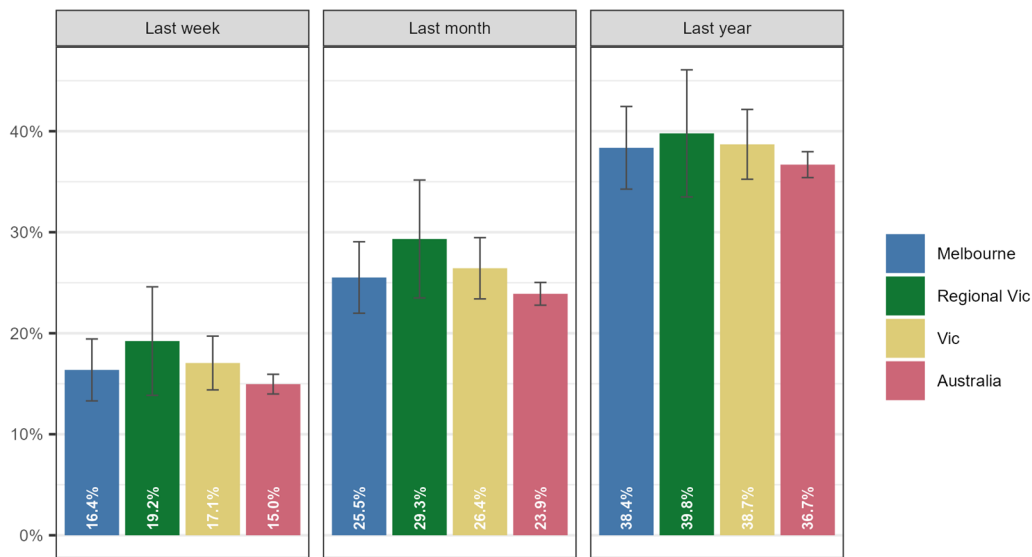
The survey suggests that 17.1% (95% CI: 14.4 % - 19.7%) of Victorian residents ride a bicycle in a typical week. More than one third (38.7%, 95% CI: 35.2% - 42.2%) had done so in the past year (Figure 3.1). These participation rates translate to approximately 1,128,900 (95% CI: 952,600 - 1,305,200) residents riding in a typical week and 2,562,000 (95% CI: 2,333,300 - 2,790,800) residents riding at least once in a typical year.



Error bars are 95% confidence intervals  
Sample: All persons

■ Figure 3.1: Cycling participation rate

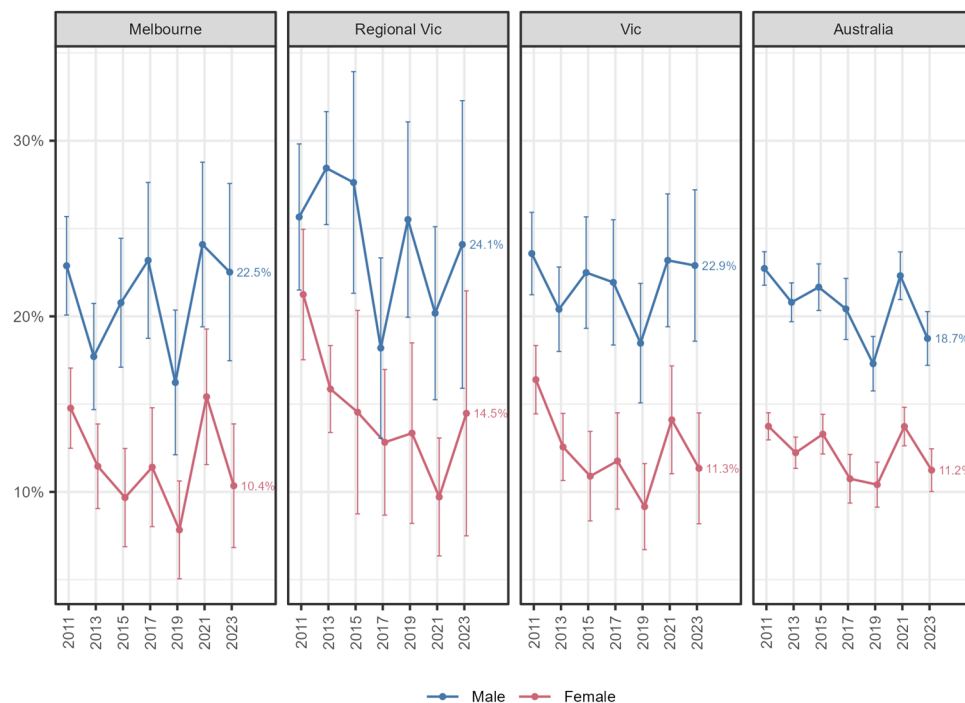
The cycling participation rate by residents of regional areas may be slightly higher than for Melbourne, although the differences are not statistically significant (Figure 3.2).



Error bars are 95% confidence intervals  
Sample: All persons

■ Figure 3.2: Cycling participation rate by region

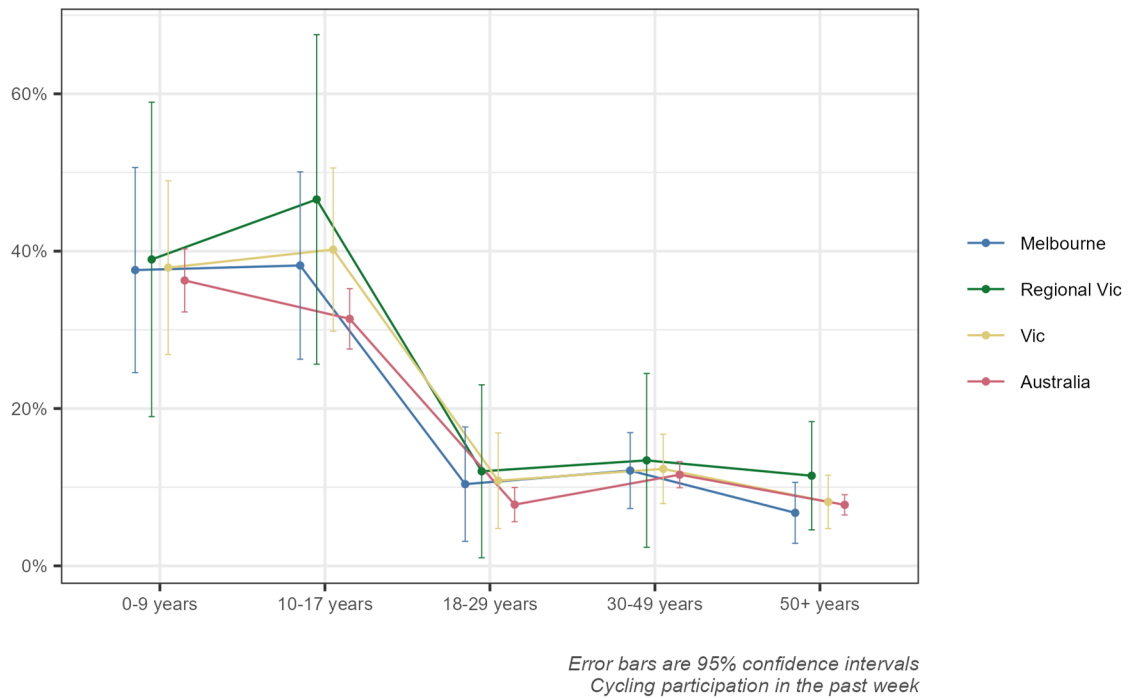
Males are significantly more likely to have ridden in the past week than females (Figure 3.3). The cycling participation rate over the past week among male residents of Victoria is 22.9% (95% CI: 18.6 – 27.2%) compared with 11.3% (95% CI: 8.2 – 14.5%) for females.



Error bars are 95% confidence intervals  
Sample: All persons, cycling participation in past week

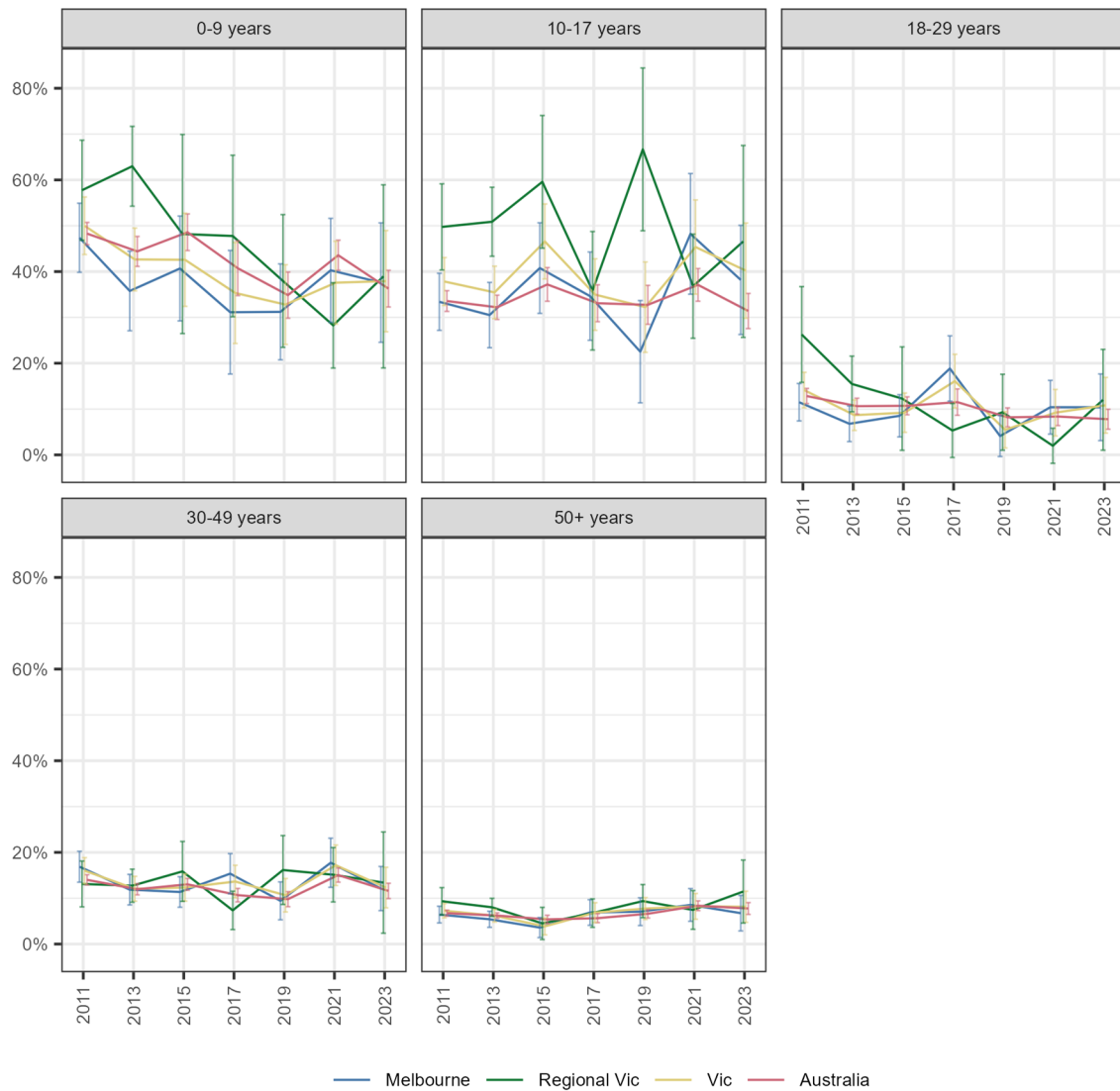
■ Figure 3.3: Cycling participation by gender

The highest cycling participation rate (measured as those who had ridden in the past week) was among children aged under 10 (Figure 3.4). The cycling participation rate deteriorates marginally among teenagers before dropping precipitously among young adults.



■ Figure 3.4: Cycling participation by age

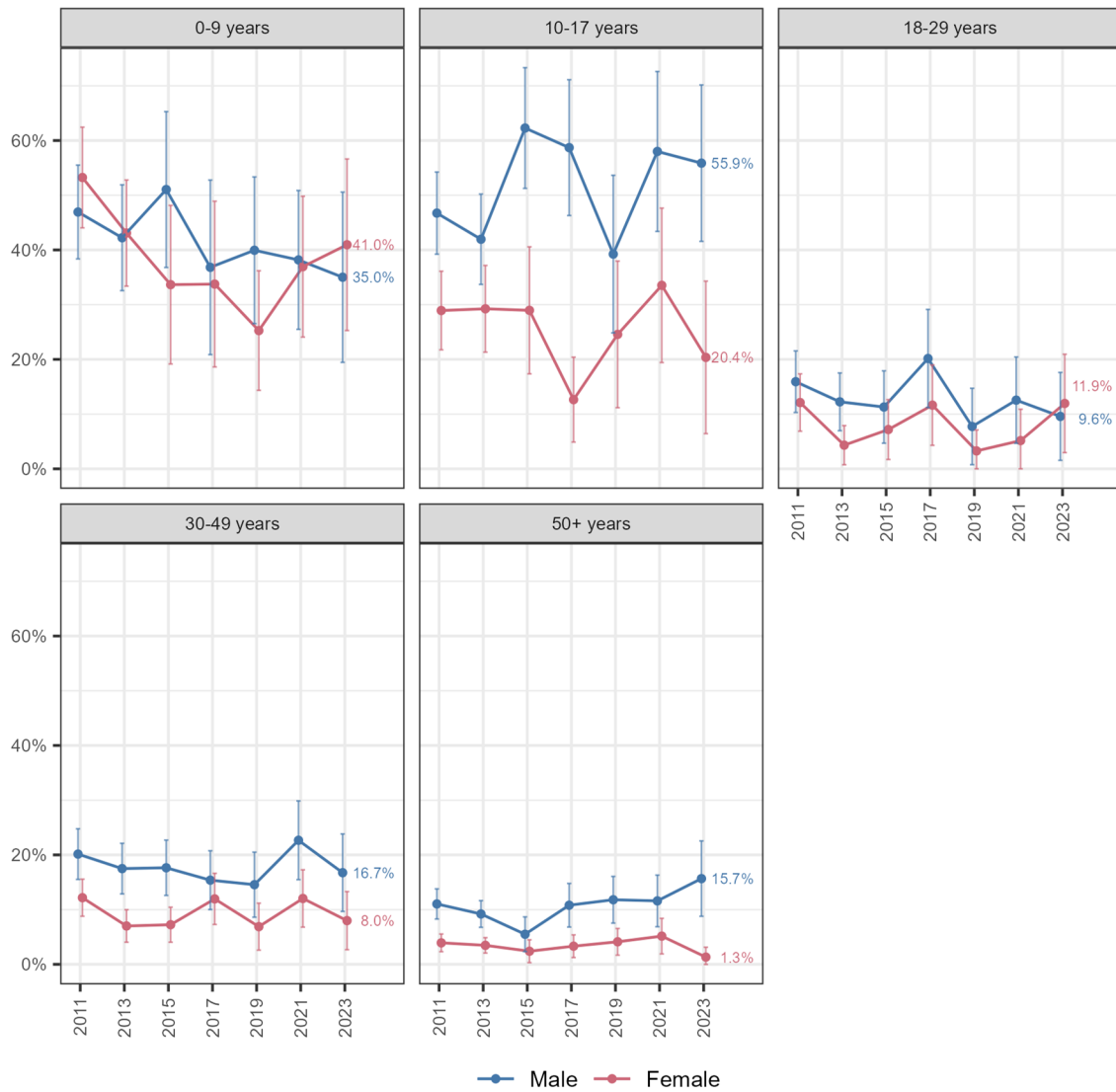
The trend in participation rate by age group since 2011 is shown in Figure 3.5. While there is significant uncertainty in many of these estimates there appear to have a decline in participation among young children over the period from 2011 to 2023.



*Error bars are 95% confidence intervals  
Cycling participation in the past week*

■ **Figure 3.5: Cycling participation by age and year**

The cycling participation rate by gender and age group over the years is shown in Figure 3.6. The gender gap in cycling participation appears greatest among teenagers and adults aged over 30.

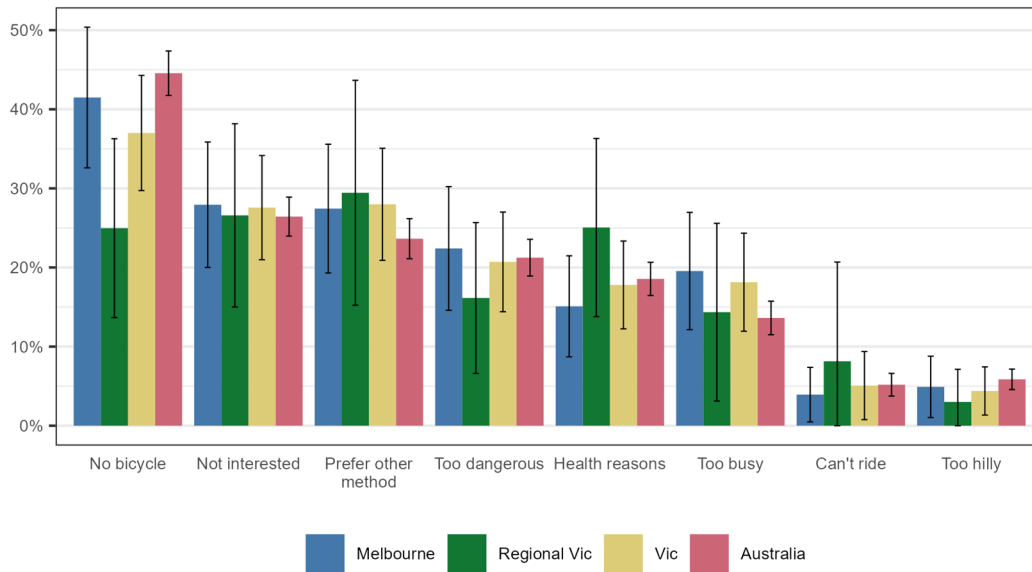


Error bars are 95% confidence intervals  
 Sample: All persons, cycling participation in past week

■ Figure 3.6: Cycling participation by age and gender



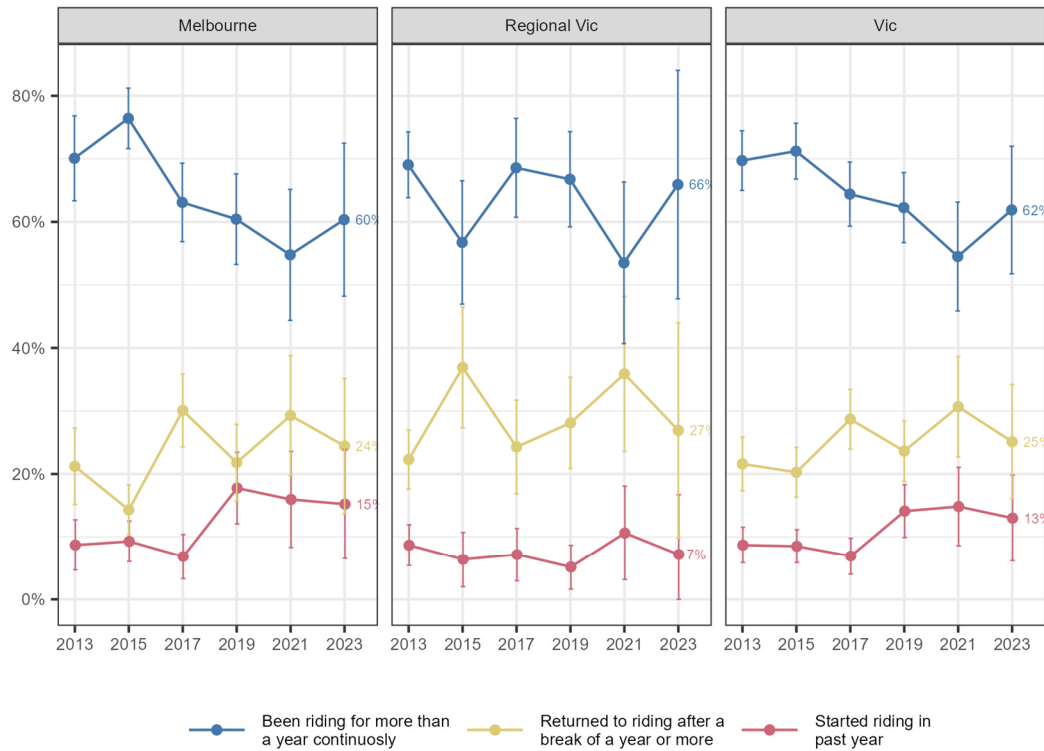
Those who had not ridden a bicycle in the past year, and who were aged 15 or older, were asked why they had not done so. The most commonly cited reason was that they did not have a bicycle (37.0%, 95% CI: 29.7 – 44.3%) followed by that they prefer other methods of getting around, aren't interested in riding or prefer other methods of getting around (Figure 3.7).



Error bars are 95% confidence intervals  
 Sample: Persons aged 15+ who had not ridden in the past year

■ Figure 3.7: Reasons for not riding a bicycle in the past year

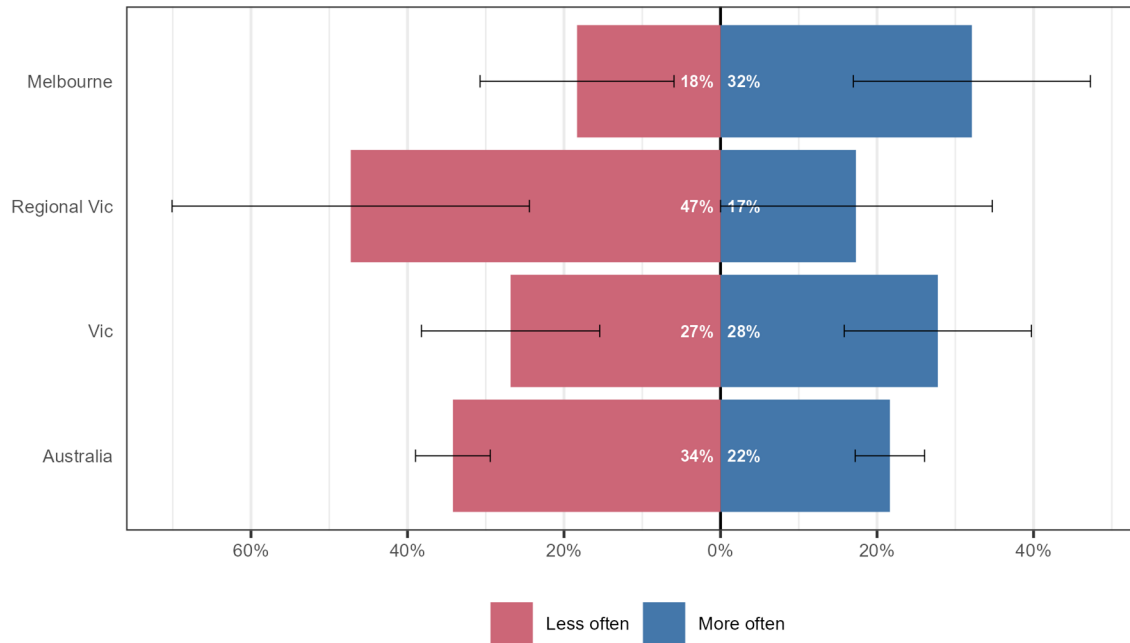
Those who indicated that they had ridden at least once over the past year were asked whether they had been cycling for a long period consistently, had recently started riding again or were altogether new to riding. This sample corresponds only to those aged 15 and over, which will contribute to the low proportion of those new to cycling. As shown in Figure 3.8, around two thirds of existing bicycle riders have been riding continuously for a year or more with around a quarter returning to riding after a break.



Error bars are 95% confidence intervals  
 Sample: Persons aged 15+ who had rode in the past year

■ Figure 3.8: Cycling history

Among those who had ridden in the past year and were aged 15 or over who had indicated they had been riding continuously for more than a year the same proportion indicated they were riding less often (26.8%, 95% CI: 15.4 - 38.2%) as more often (27.8%, 95% CI: 15.8 - 39.7%) (Figure 3.9). The much higher proportion riding less often in regional Victoria may be an artefact of the small sample sizes for this region.

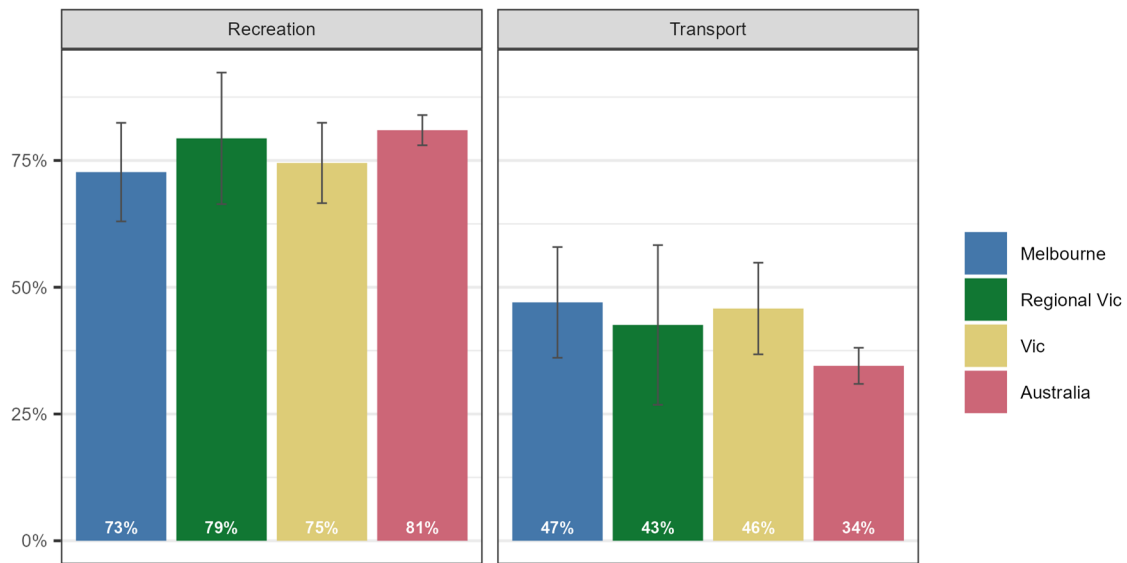


*Error bars are 95% confidence intervals*

■ **Figure 3.9: Cycling frequency**

### 3.2 Purpose

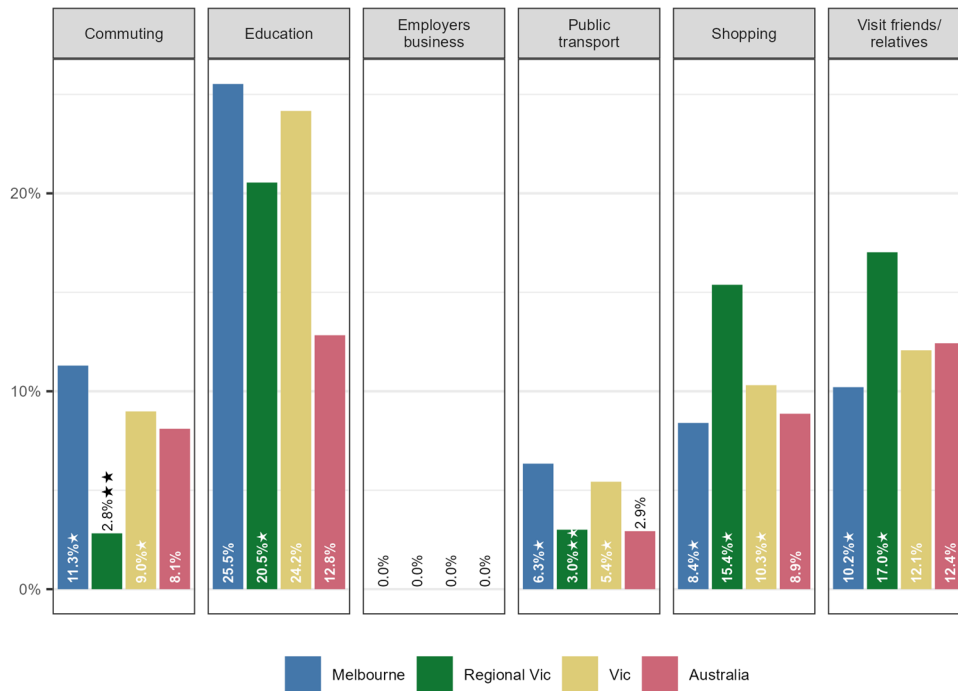
Of the people who cycled in Victoria in the last month, 74.5% (95% CI: 66.6 – 82.4%) cycled for recreation and 45.8% (95% CI: 36.8 – 54.8%) used a bicycle for transport (Figure 3.10).



Error bars are 95% confidence intervals  
 Sample: All persons who had ridden in the past month  
 ★ Estimate should be treated with caution  
 ★★ Estimate should be considered unreliable

■ Figure 3.10: Cycling for recreation in comparison to cycling for transport

The main transport purposes for riding were commuting, education and to visit friends and relatives (Figure 3.11). Very few had ridden to access public transport.



Sample: All persons who had ridden in the past month.  
 ★ Estimate should be treated with caution  
 ★★ Estimate should be considered unreliable

■ Figure 3.11: Purpose of cycling for transport

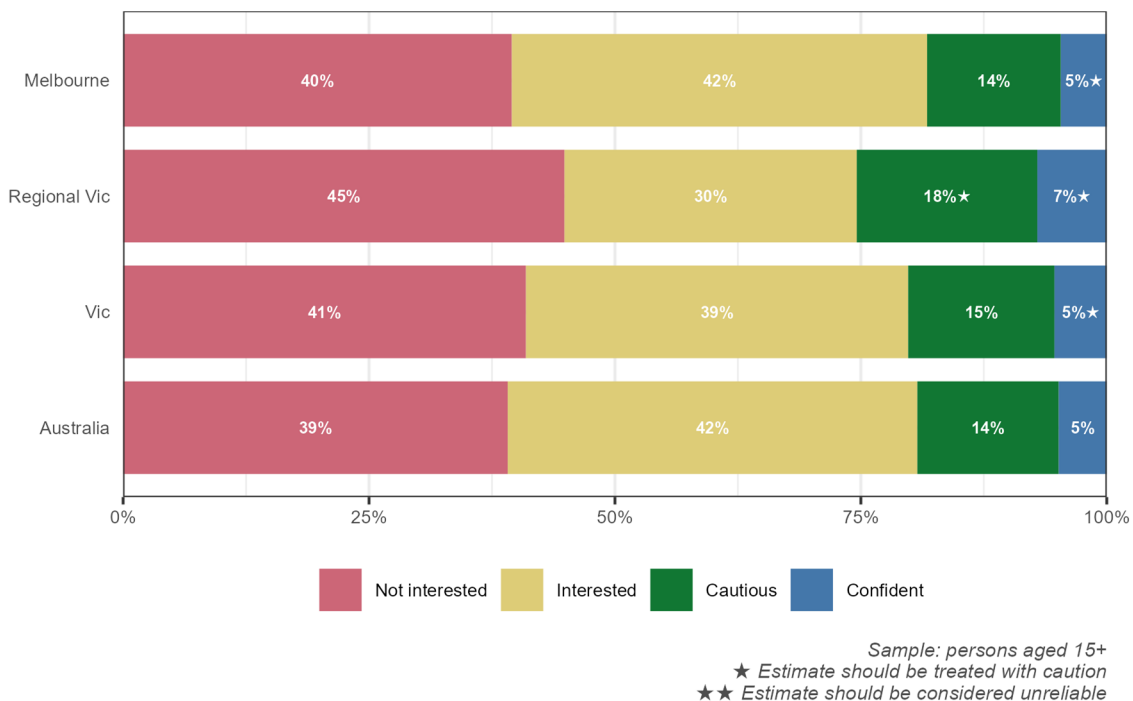
### 3.3 Perceptions towards cycling

Respondents aged 15 or older who had ridden in the past year were asked about their riding style, including which of the following statements best describes the way they ride their bicycle in the presence of traffic:

1. I prefer paths or quiet streets and am willing to take a longer way to avoid busy roads
2. I prefer to use the most direct and convenient way regardless of traffic
3. I would never ride my bike on a road

Those who indicated they prefer direct routes were classified as *confident*, those that prefer paths or quiet streets as *cautious* and those that would never ride on-road as *interested*. Those that had not ridden in the past year were asked why that was the case; if they indicated they cannot ride for health reasons, do not know how to ride or are not interested in riding they were classified as *not interested*. Those that did not provide any of these three reasons for not riding were then asked whether they (a) are not a bike rider but would like to be, or (b) do not want to be a bike rider. Those who indicated they would like to ride were classified as *interested* while those who do not want to ride were classified as *not interested*.

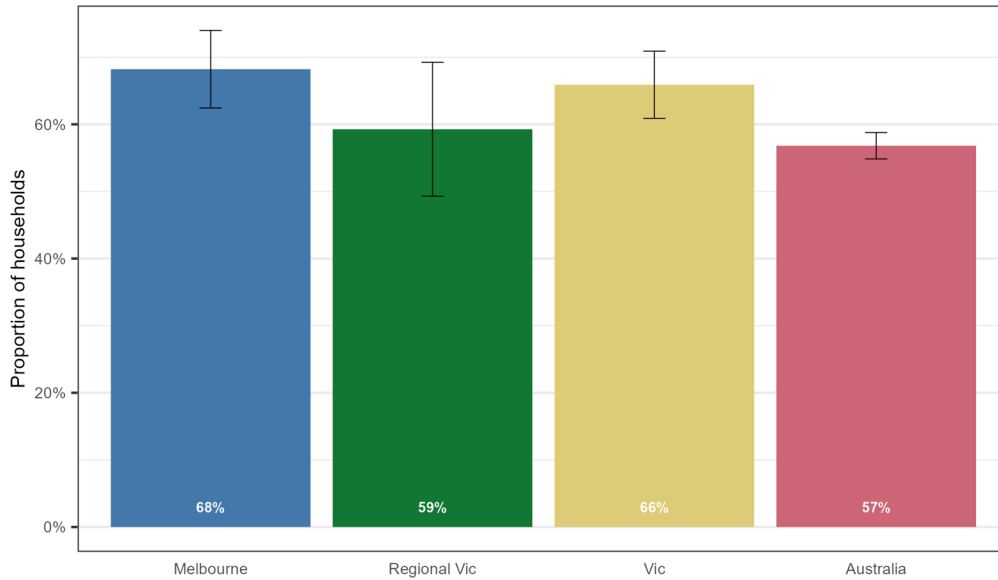
The results of this segmentation both nationally and at the jurisdictional level is shown in Figure 3.12. Across Vic it is estimated that 41% of the population (95% CI: 34.5 – 47.4%) aged 15 or older either cannot ride or are not interested in riding. A further 38.9% (95% CI: 32.4 – 45.3%) are interested; that is, they either do not currently ride but would like to or do ride but only off-road. Around 14.9% (95% CI: 10.2 – 19.5%) ride at least occasionally but will take a longer route to avoid highly trafficked streets. The remaining 5.3% (95% CI: 2.4 – 8.3%) are confident riders who will take the shortest route to their destination even if it is a busy street.



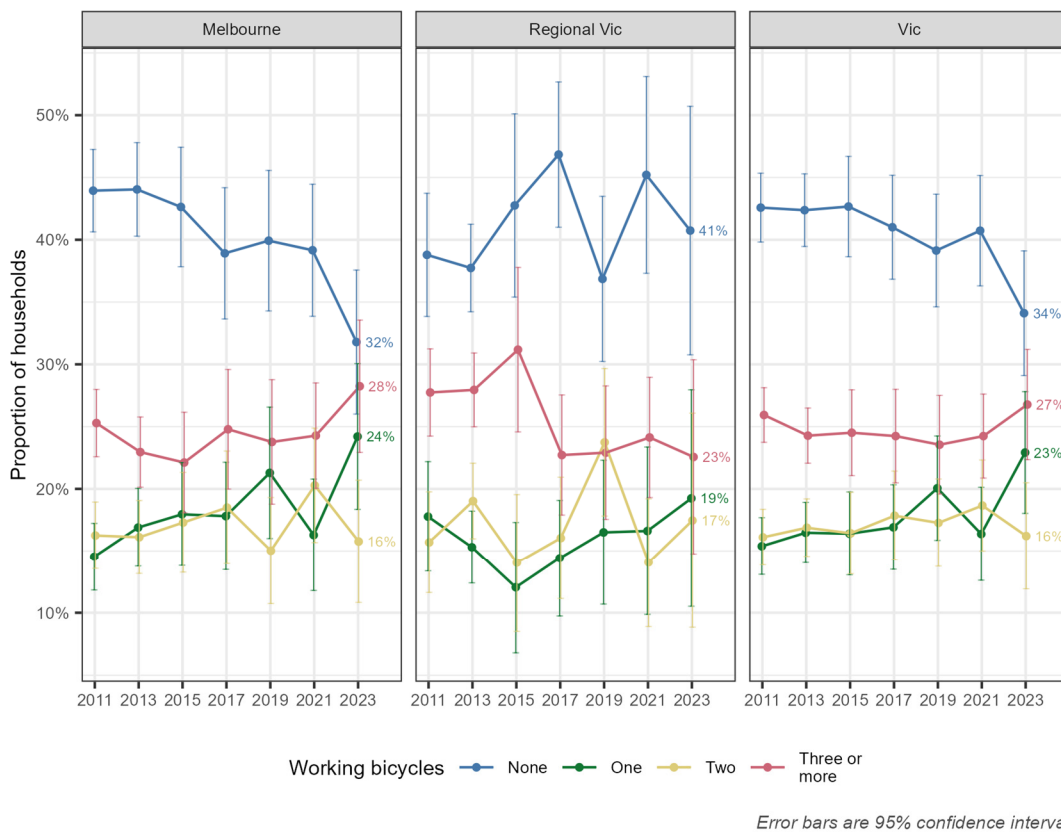
■ Figure 3.12: Willingness to consider bicycle riding

### 3.4 Bicycle ownership

Around 65.9% (95% CI: 60.9 – 70.9%) of households in Victoria have at least one working bicycle in their household (Figure 3.13). This definition of bicycles includes electrically assisted bicycles. Bicycle ownership may have increased between 2021 and 2023 (Figure 3.14).

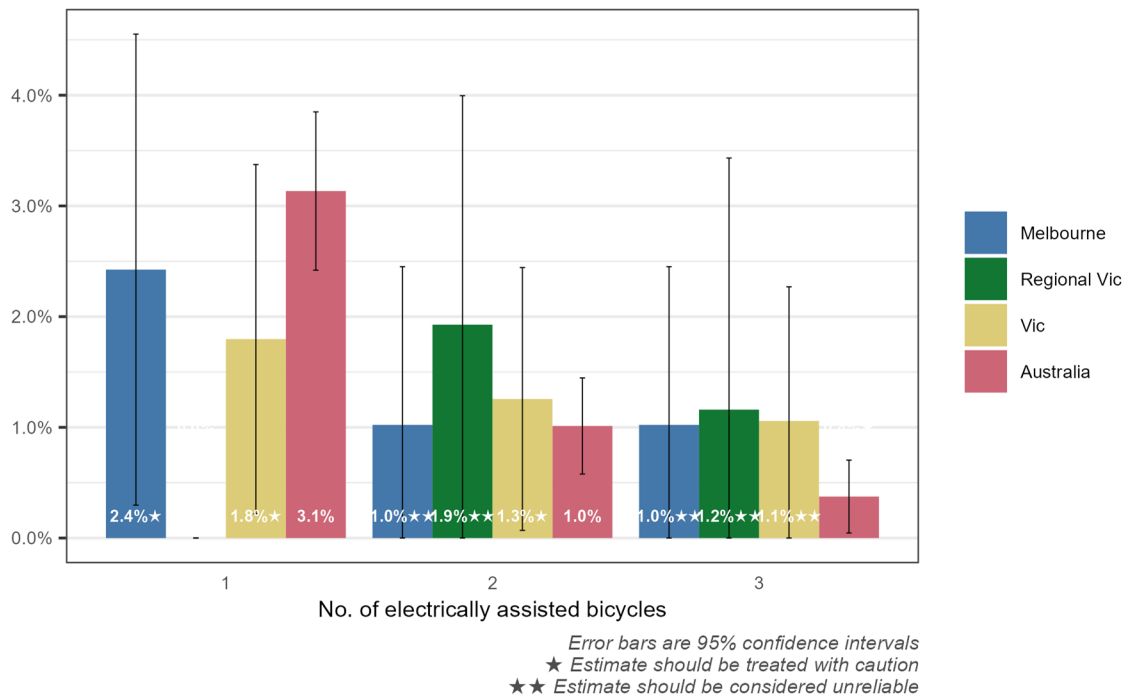


■ Figure 3.13: Households with at least one working bicycle



■ Figure 3.14: Bicycle ownership by year

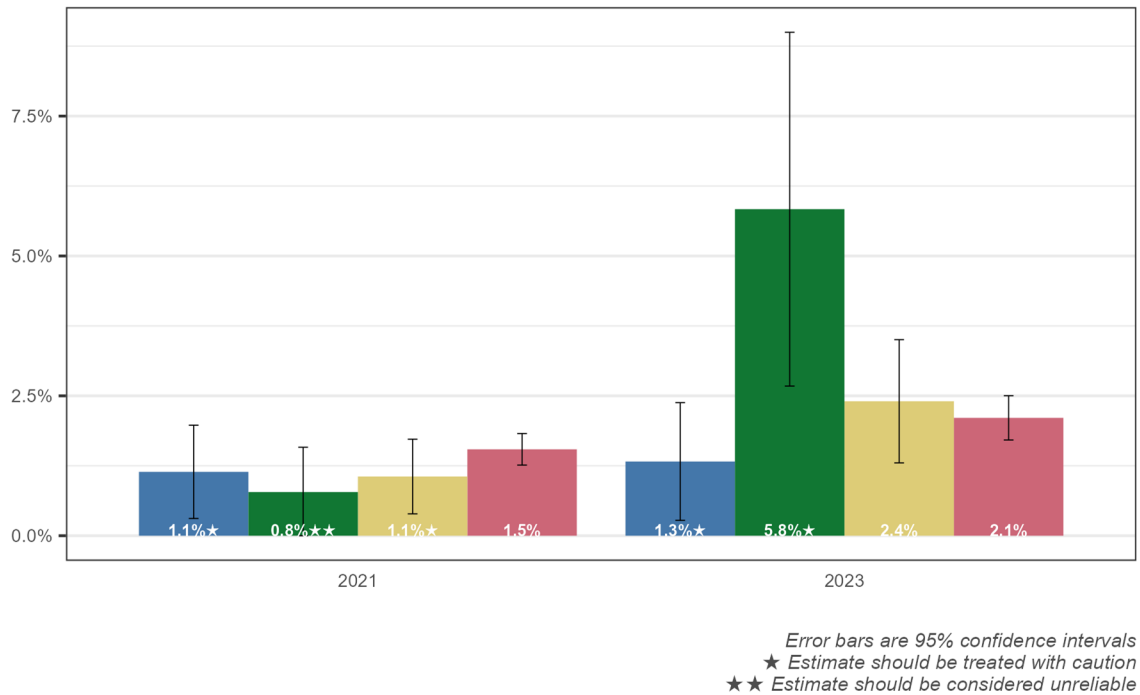
Around 4.1% (95% CI: 1.8 – 6.4%) of households in Victoria have at least one electrically assisted bicycle in their household (Figure 3.15).



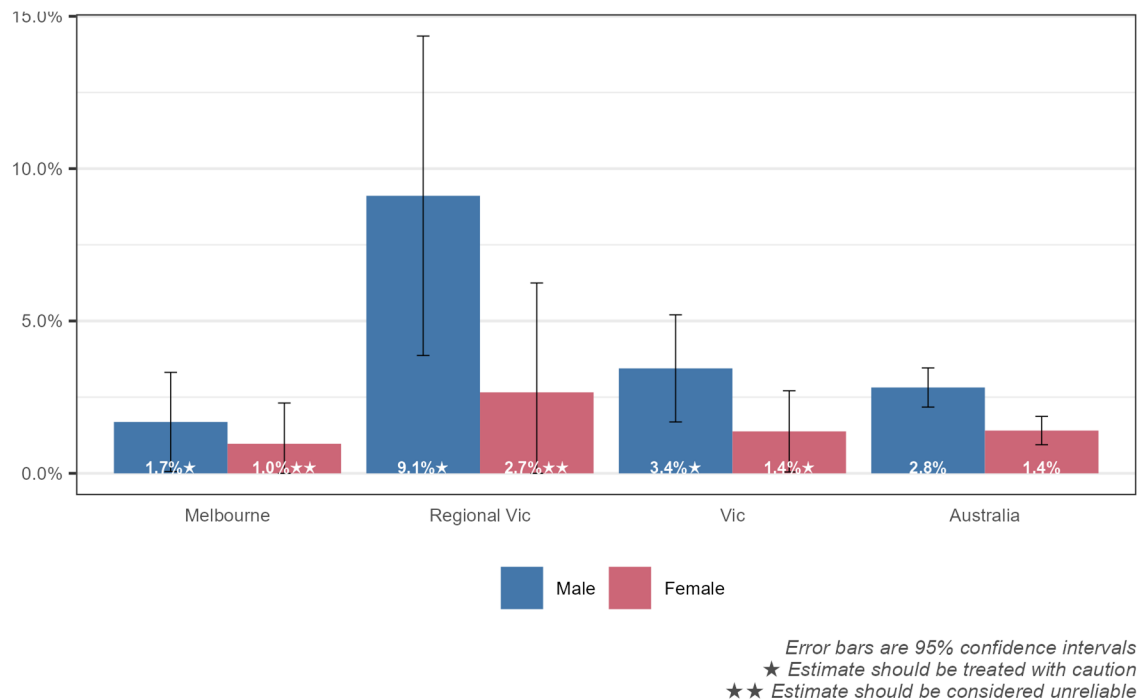
■ **Figure 3.15: Electrically-assisted bicycle ownership**

## 4 Rideables

It is estimated that 2.4% (95% CI: 1.3 – 3.5%) of the Victorian population ride an electrically assisted rideable such as an e-scooter or e-skateboard<sup>2</sup> in a typical week (Figure 4.1). Males appear to be more likely to use rideables than females (Figure 4.2); around 3.4% (95% CI: 1.7 – 5.2%) of males and 1.4% (95% CI: 0.0 – 2.7%) of females ride these devices in a typical week.



■ **Figure 4.1: Population proportions that rode an electrically powered rideable in the past week**



■ **Figure 4.2: Population proportions that rode an electrically powered rideable in the past week by gender**

<sup>2</sup> This definition excludes electrically assisted bicycles, which were instead classified as bicycles.



## Appendix A: Data Tables

The following table summarises the survey results. Estimates are provided for each parameter, as well as the 95% confidence interval and a confidence rating. This confidence rating provides an indication of the sampling variability relative to the size of the estimate using relative standard errors. The lower the relative standard error the lower the sampling variability is relative to the size of the estimate. Estimates with three stars indicate a relative standard error of less than 25% such that the estimate can be treated with a high degree of confidence. A relative standard error of between 25% and 50% is denoted by two stars and above 50% by one star. A confidence rating of two stars indicates a moderate level of confidence, such that the estimate should be treated with caution. One star represents a situation where there is very low confidence in the estimate, and it is unlikely to be reliable.

**Table A.1: Walking participation statistics**

<b>Statistic</b>	<b>Estimate</b>	<b>95% confidence interval</b>	<b>Confidence rating</b>
Participation in past week	88.4%	85.9%-90.8%	★★★
<b>Purpose in past month</b>			
Recreation/exercise	73.1%	67.6%-78.6%	★★★
Shopping	50.7%	44.6%-56.8%	★★★
Cafe/restaurant	39.2%	33.1%-45.2%	★★★
Visit friends and relatives	27.5%	22.0%-33.0%	★★★
Employers' business	28.5%	23.0%-33.9%	★★★
Dog walking	37.7%	31.8%-43.7%	★★★
Commuting	21.2%	16.3%-26.2%	★★★
Public transport	20.6%	15.6%-25.5%	★★★
Escort	17.7%	13.1%-22.3%	★★★
<b>Travel</b>			
<i>Caution: walking travel estimates are biased by self-reporting and recall limitations and should be treated with a high level of caution.</i>			
Average number of days walked in the past week	4.9	4.6-5.2	★★★
Median hours walked in the past week	3.5	3.5-4.0	★★★
<b>Change in walking frequency</b>			
More frequent	25.9%	19.5%-32.3%	
As frequent	55.4%	48.6%-62.2%	
Less frequent	18.7%	14.5%-22.9%	

**Table A.2: Cycling participation statistics**

Cycling participation	Estimate	95% confidence interval	Confidence rating
% who rode last week	17.1%	14.4%-19.7%	★★★
% who rode last month	26.4%	23.4%-29.5%	★★★
% who rode in past year	38.7%	35.2%-42.2%	★★★
No. who rode last week	1,128,900	952,600-1,305,200	★★★
No. who rode last month	1,749,900	1,549,200-1,950,700	★★★
No. who rode in past year	2,562,000	2,333,300-2,790,800	★★★
<b>Participation by demography</b>			
<b>Gender</b>			
% of males who rode last week	22.9%	18.6%-27.2%	★★★
% of females who rode last week	11.3%	8.2%-14.5%	★★★
<b>Age</b>			
% of 0-9 years who rode last week	37.9%	26.9%-48.9%	★★★
% of 10-17 years who rode last week	40.2%	29.8%-50.6%	★★★
% of 18-29 years who rode last week	10.8%	4.7%-16.9%	★★
% of 30-49 years who rode last week	12.3%	7.9%-16.7%	★★★
% of 50+ years who rode last week	8.1%	4.7%-11.5%	★★★
<b>Gender by age</b>			
Male: 0-9 years	35.0%	19.5%-50.6%	★★★
Male: 10-17 years	55.9%	41.6%-70.2%	★★★
Male: 18-29 years	9.6%	1.5%-17.6%	★★
Male: 30-49 years	16.7%	9.7%-23.8%	★★★
Male: 50+ years	15.7%	8.8%-22.6%	★★★
Female: 0-9 years	41.0%	25.3%-56.6%	★★★
Female: 10-17 years	20.4%	6.4%-34.3%	★★
Female: 18-29 years	11.9%	3.0%-20.9%	★★
Female: 30-49 years	8.0%	2.7%-13.3%	★★
Female: 50+ years	1.3%	0.0%-3.1%	★

**Table A.2 (cont.): Cycling participation statistics**

Participation by purpose	Estimate	95% confidence interval	Confidence rating
<b>Summary</b>			
% of those who rode in past month for recreation/exercise	74.5%	66.6%-82.4%	★★★
% of those who rode in past month for transport	45.8%	36.8%-54.8%	★★★
<b>Detail</b>			
% of those who rode in past month for commuting	9.0%	4.0%-14.0%	★★
% of those who rode in past month for education	24.2%	16.3%-32.0%	★★★
% of those who rode in past month for shopping	10.3%	4.9%-15.8%	★★
% of those who rode in past month to train/tram/bus	5.4%	1.2%-9.6%	★★
% of those who rode in past month to visit friends/relatives	12.1%	6.3%-17.9%	★★★
<b>Cycling travel</b>			
<i>Caution: cycling travel estimates are biased by self-reporting and recall limitations and should be treated with a high level of caution.</i>			
Average number of days ridden by those that had ridden in past week	3.1	2.8-3.5	★★★
Average time ridden (mins) in past week by those that had ridden	171	131-210	★★★
<b>Household characteristics</b>			
<b>Working bicycles (incl. electrically assisted)</b>			
% of households without a working bicycle	34.1%	29.1%-39.1%	★★★
% of households with one working bicycle	22.9%	18.0%-27.8%	★★★
% of households with two working bicycles	16.2%	11.9%-20.5%	★★★
% of households with three or more working bicycles	26.8%	22.3%-31.2%	★★★

# Appendix B: Survey Script

## INTRODUCTION

My name is (...) calling on behalf of [insert relevant state roads authority or Council] from the Local Government Research Group. We are conducting a study to help the Government understand where to invest in transport infrastructure in your local area. The survey takes 10 minutes depending on how much you have to say... we abide by the Privacy Act and this call may be monitored for training and quality control purposes.

RESPONDENTS MUST BE AGED 15 YEARS OR OVER. DO NOT MENTION CYCLING IN INTRO.

Your responses will be held strictly confidential. My supervisor may listen to parts of this interview to assist in quality control monitoring.

CONTINUE	1
AM MSG Answering machine, leave message	2
AM Answering machine, didn't leave message	3
CB Schedule callback	4
COMM Communication difficulty	5
DUP Duplicate	6
HR Hard refusal / hang up	7
LOTE Language other than English	8
NA No answer / engaged	9
NQ Non qualify / non-residential / incorrect details / business number / under 15	10
OQ Over quota	11
SR Soft refusal / busy at time	12
TE Terminated early (survey started by completed)	13

## CONFIRM LOCATION (LGA, REGION)

Q.1. We are interested in speaking to people who live in [READ IN POSTCODE]. Can you confirm this is your postcode?

Yes 1

No (SPECIFY POSTCODE) 2

Q.2. Ask only Council samples – otherwise go to next question

And can you confirm that your council area is (READ IN COUNCIL AREA)?

INSERT COUNCIL AREA .....

## CHECK QUOTAS AND CONTINUE OR TERMINATE AS REQUIRED

## SECTION 1: MAIN RESPONDENT'S TRAVEL

Q.3. In the last 7 days, have you used any of the following? (READ OUT) (ACCEPT MULTIPLES)

Car as a driver	1
Car as a passenger	2
Motorcycle or moped	3
Public transport	4
Wheelchair or mobility scooter	5
Bicycle, even just riding in your backyard	6
None of the above	7

INTERVIEWER NOTE: DEFINITIONS OF BICYCLES INCLUSIONS:

- ADULT AND CHILDREN'S BICYCLES WITH TWO OR MORE WHEELS
- CHILDRENS BICYCLES WITH TRAINING WHEELS

EXCLUSIONS:

- ANY REGISTERED VEHICLES (E.G. MOPEDS)
- CHILDREN RIDING TOYS SUCH AS TRICYCLES AND SCOOTERS
- CHILDREN WHO ARE IN A SEAT OR TRAILER ON A BICYCLE
- RIDING ON A STATIONARY EXERCISE BICYCLE

Q.4. In the last 7 days have you ridden on an electrically assisted rideable such as a e-scooter or e-skateboard, excluding an e-bike?

Yes	1
No	2

## WALKING

Now we would like to ask you about walking/mobility aids/wheelchair travel.

Q.5. In the last 7 days have you walked/used your wheelchair or mobility scooter for ten minutes or more, somewhere outside of your home? NOTE: This includes walking for exercise or to reach a destination like the shops, school, workplace, to or from public transport or even a car park to a destination. INCLUDE: walking the dog, walk for work if not on home property, walking using walking aids like walking frames and sticks or wheelchairs or mobility scooters, or walking for ten minutes or more in a shopping centre. EXCLUDE: gardening, treadmill at home or gym

Yes	1
No	2

Q.6. IF DID NOT WALK IN LAST 7 DAYS Are there any reasons you did not walk / use your wheelchair or mobility scooter at least once for ten minutes or more in the last 7 days?

Health reasons	1
Too busy	2
Prefer other methods of getting around	3

Had no need	4
Some other reason (please specify)	5
No reason	6

Q.7. IF DID NOT WALK IN LAST 7 DAYS When did you last walk/use your wheelchair or mobility scooter for at least ten minutes?

In the last 2 weeks	1
In the last 3 weeks	2
In the last 4 weeks	3
More than a month ago	4
More than a year ago	5
Never	6

Q.8. IF WALKED IN LAST 7 DAYS In the last 7 days on how many days did you walk/use your wheelchair or mobility scooter for at least ten minutes?

Days \_\_\_\_

Q.9. IF WALKED IN LAST 7 DAYS What is your best estimate of the total time you have spent walking/using your wheelchair or mobility scooter over the past 7 days?

Hours \_\_\_\_

Q.10. IF WALKED IN LAST 4 WEEKS During the past 4 weeks have you walked/used your mobility scooter for at least ten minutes for any of the following purpose?

Recreation or exercise	1
Walking the dog	2
To or from work	3
To or from school, university or study	4
To or from shopping	5
To visit a café or restaurant	6
To get to public transport	7
As part of your work, such as delivering good or attending a meeting	8
Escorting someone like walking a child to school	9
To visit family or friends	10
Some other reason (please specify)	11

Q.11. IF WALKED IN PAST YEAR And would you say that you walk/use your wheelchair or mobility scooter more frequently, as frequently or less frequently than a year ago?

More frequently than a year ago	1
As frequently as a year ago	2
Less frequently than a year ago	3

Q.12. IF WALKED IN LAST 4 WEEKS Why do you say that?

Record verbatim

### **CYCLING**

Q.13. IF DID NOT RIDE IN THE PAST 7 DAYS When did you last ride a bicycle? (READ OUT)

In the last 2 weeks	1
In the last 3 weeks	2
In the last 4 weeks	3
More than a month ago	4
More than a year ago	5
Never	6

Q.14. IF DID NOT RIDE IN PAST YEAR Are there any reasons you have not ridden a bicycle in the past year? READ OUT

Health reasons	1
I don't know how to ride a bicycle	2
I don't own a bicycle	3
Too busy to ride	4
Prefer other methods of getting around	5
I feel unsafe riding in traffic	6
Too hilly	7
I'm not interested in riding	8
Some other reason (please specify)	9
No reason	10

Q.15. IF RODE IN PAST 7 DAYS In the last 7 days on how many days did you ride a bicycle?  
DAYS \_\_\_\_\_

Q.16. IF RODE IN PAST 7 DAYS What is your best estimate of the total time you have spent riding over the past 7 days?

HOURS \_\_\_\_\_

Q.17. IF RODE IN PAST 4 WEEKS For what purposes did you ride over the last 7 days/2 weeks/3 weeks/4 weeks? (READ OUT) (ACCEPT MULTIPLES)

To or from work	1
To or from school, university or study	2
To or from shopping	3
For recreation or exercise	4
To get a train, bus or tram	5
To visit family or friends	6
Some other reason (Specify)	7



Q.18. ASK IF RODE IN PAST YEAR Which of the following statements best describes you? Would you say you... (READ OUT)

- |  |   |
|--|---|
| Are new to cycling and started cycling in the last 12 months   | 1 |
| Have started to cycle again after a break of 12 months or more | 2 |
| Have been cycling for more than 12 months                      | 3 |

Q.19. ASK IF HAVE BEEN CYCLING FOR MORE THAN 12 MONTHS And would you say that you... (READ OUT)

- |                                       |   |
|---------------------------------------|---|
| Cycle more frequently than a year ago | 1 |
| Cycle as frequently as a year ago     | 2 |
| Cycle less frequently than a year ago | 3 |

Q.20. IF SAMPLE = LGA AND RODE IN PAST YEAR Now we would like you to think about how at ease you are when bike riding within your local area. Can you tell me if you are comfortable, neither comfortable nor uncomfortable or uncomfortable when riding in your local area?

- |  |   |
|--|---|
| Very comfortable                             | 1 |
| Comfortable                                  | 2 |
| Neither comfortable nor uncomfortable        | 3 |
| Uncomfortable                                | 4 |
| Very uncomfortable                           | 5 |
| Have not ridden in the area in the past year | 6 |

Q.21. IF RODE IN PAST YEAR We would like you to think about the way you ride your bike in the presence of traffic when on-road. Which of the following best describes your riding style? READ OUT

- |   |   |
|---|---|
| I prefer paths or quiet streets and am willing to take a longer way to avoid busy roads | 1 |
| I prefer to use the most direct and convenient way regardless of traffic                | 2 |
| I would never ride my bike on a road  | 3 |

Q.22. IF DID NOT RIDE IN PAST YEAR Which of the following phrases best describes you as a bike rider? READ OUT

- |                                       |   |
|---------------------------------------|---|
| Not a bike rider but would like to be | 1 |
| Do not want to be a bike rider        | 2 |

Q.23. IF SAMPLE = LGA AND RODE IN PAST YEAR In the past year, do you think cycling conditions in your local have become much better, better, about the same, worse or much worse?

- |                |   |
|----------------|---|
| Much better    | 1 |
| Better         | 2 |
| About the same | 3 |
| Worse          | 4 |
| Much worse     | 5 |

Don't know

6

Q.24. IF SAMPLE = LGA AND RODE IN PAST YEAR Do you have any comments regarding conditions for bike riding in your local area?

Q.25. IF SAMPLE = LGA Do you have any suggestions for actions you would like to see the <COUNCIL> take regarding bike riding in your local area?

Q.27. IF SAMPLE = LGA AND RODE IN PAST YEAR There are a number of actions <COUNCIL> could take to encourage bike riding in your local area. For each of the following, can you tell me whether these are very high, high, moderate, low or not a priority? ROTATE

More off-road shared paths and cycleways	1
More on-road bicycle lanes	2
Better connections between bike paths and schools	3
Better connections between bike paths and shops	4
Better connections between bike paths and parks and swimming pools	5
Better connections between bike paths and public transport	6
More bicycle parking	7
Lower local road speed limits	8
More bike skills training	9
More signs highlighting bike routes	10
More events or campaigns that promote bike riding	11

## SECTION 2: MAIN RESPONDENT'S DEMOGRAPHICS

We'd like to ask a few questions to help us classify your responses.

Q.28. What gender do you identify as?

Male	1
Female	2
Prefer to self-describe	3
Refused	4

Q.29. AGE: What is your age? (INSERT 99 FOR DON'T KNOW – NONE SHOULD BE UNDER 15 YEARS OF AGE)

Do not use	1
Do not use	2
Do not use	3
Do not use	4
15 to 17 years	5
18 to 24 years	6

25 to 29 years	7
30 to 39 years	8
40 to 49 years	9
50 to 59 years	10
60 to 69 years	11
70 to 79 years	12
80 years or over	13
(Refused)	14

Q.30. Which of the following categories apply to you at the moment? (READ OUT) (ACCEPT MULTIPLES)

Student – Full time	1
Student – Part time	2
Work – Full time (>35hrs/week)	3
Work – Part time (<35hrs/week)	4
Work – Casual	5
Work – Unpaid voluntary work	6
Unemployed and looking for work	7
Home duties	8
Pensioner – not retirement age	9
Retired – on pension	10
Retired – not on pension	11
Other (Specify)	12
(Refused)	13

Q.31. In which country were you born?

Australia	1
UK (England, Scotland, Wales, Northern Ireland)	2
New Zealand	3
India	4
Italy	5
Vietnam	6
Phillipines	7
China	8
South Africa	9
Malaysia	10
Sri Lanka	11
Germany	12
South Korea	13
Greece	14

Hong Kong	15
USA	16
Other (please specify)	17

Q.32. How many people usually live in your household? INCLUDE ALL AGES – A RESIDENT IS SOMEONE WHO HAS, OR WILL, LIVE AT THE HOUSEHOLD FOR A PERIOD OF AT LEAST 3 MONTHS

RECORD NUMBER \_\_\_\_\_

**LOOP THROUGH NEXT SECTION FOR EACH ADDITIONAL RESIDENT AGED 2+ UP TO NINE ADDITIONAL RESIDENTS**

**SECTION 3: OTHER HOUSEHOLD MEMBERS TRAVEL**

To build an accurate representation of travel habits of members in households in Australia we'd like to ask about other people in your household starting with the oldest person other than yourself and working down, could you tell me...?

Q.33. What gender do they identify as?

Male	1
Female	2
Prefer to self-describe	3
Refused	4

Q.34. AGE: What is their age? (INSERT 99 FOR DON'T KNOW)

Under 2 years	1
2 to 4 years	2
5 to 9 years	3
10 to 14 years	4
15 to 17 years	5
18 to 24 years	6
25 to 29 years	7
30 to 39 years	8
40 to 49 years	9
50 to 59 years	10
60 to 69 years	11
70 to 79 years	12
80 years or over	13
(Refused)	14
(Don't know)	15

Q.35. Which of the following categories apply to THIS PERSON at the moment? (READ OUT)  
(ACCEPT MULTIPLES)

Student – Full time	1
Student – Part time	2
Work – Full time (>35hrs/week)	3
Work – Part time (<35hrs/week)	4
Work – Casual	5
Work – Unpaid voluntary work	6
Unemployed and looking for work	7
Home duties	8
Pensioner – not retirement age	9
Retired – on pension	10
Retired – not on pension	11
Other (Specify)	12
(Refused)	13
Child – not school age	14

Q.36. In which country were they born?

Australia	1
UK (England, Scotland, Wales, Northern Ireland)	2
New Zealand	3
India	4
Italy	5
Vietnam	6
Phillipines	7
China	8
South Africa	9
Malaysia	10
Sri Lanka	11
Germany	12
South Korea	13
Greece	14
Hong Kong	15
USA	16
Other (please specify)	17

Q.37. In the last 7 days, has this person used any of the following methods of transport? (READ OUT) (ACCEPT MULTIPLES)

Car as a driver	1
Car as a passenger	2

Motorcycle or moped	3
Public transport	4
Wheelchair or mobility scooter	5
Bicycle, even just riding in your backyard	6
None of the above	7
(Don't know)	8

**INTERVIEWER NOTE: DEFINITIONS OF BICYCLES**

**INCLUSIONS:**

- ADULT AND CHILDREN'S BICYCLES WITH TWO OR MORE WHEELS
- CHILDRENS BICYCLES WITH TRAINING WHEELS

**EXCLUSIONS:**

- ANY REGISTERED VEHICLES (E.G. MOPEDS)
- CHILDREN RIDING TOYS SUCH AS TRICYCLES AND SCOOTERS
- CHILDREN WHO ARE IN A SEAT OR TRAILER ON A BICYCLE
- RIDING ON A STATIONARY EXERCISE BICYCLE

Q.38. In the last 7 days has this person ridden on an electrically assisted rideable like an e-scooter or e-skateboard excluding e-bikes?

Yes	1
No	2
Don't know	3

**WALKING**

Q.39. In the last 7 days has this person walked/used a wheelchair or mobility scooter for 5 minutes or more, somewhere outside of their home? NOTE: This includes walking for exercise or to reach a destination like the shops, school, workplace, to or from public transport or even a car park to a destination. INCLUDE: walking the dog, walk for work if not on home property, walking using walking aids like walking frames and sticks or wheelchairs or mobility scooters, or walking for ten minutes or more in a shopping centre. EXCLUDE: gardening, treadmill at home or gym

Yes	1
No	2

Q.40. IF DID NOT WALK IN LAST 7 DAYS When did they last walk/use a wheelchair or mobility scooter for at least ten minutes?

In the last 2 weeks	1
In the last 3 weeks	2
In the last 4 weeks	3
More than a month ago	4
More than a year ago	5
Never	6

## **CYCLING**

Q.41. IF DID NOT RIDE IN LAST 7 DAYS AND AGED 2+ When did this person last ride a bicycle?  
(READ OUT)

In the last 2 weeks	1
In the last 3 weeks	2
In the last 4 weeks	3
More than a month ago	4
More than a year ago	5
Never	6
(Don't know)	7

Q.42. IF RODE IN LAST 7 DAYS In the last 7 days, on how many days did they ride a bicycle?  
(RECORD 99 FOR DON'T KNOW)

DAYS \_\_\_\_\_

Q.43. IF RODE IN LAST 7 DAYS What is your best estimate of the total time they have spent riding over the past 7 days?

(RECORD 99 FOR DON'T KNOW)

HOURS: \_\_\_\_\_

Q.44. IF RODE IN PAST 4 WEEKS For what purposes did they ride over the last 7 days/2 weeks/3 weeks/4 weeks? (READ OUT) (ACCEPT MULTIPLES)

To or from work	1
To or from school, university or study	2
To or from shopping	3
For recreation or exercise	4
To get a train, bus or tram	5
To visit friends or relatives	6
Some other reason (please specify)	7
Don't know	8

## **END PERSON LOOP**

Q.45. How many bicycles in working order are in your household? INTERVIEWER NOTE:  
DEFINITIONS OF BICYCLES

INCLUSIONS:

- ADULT AND CHILDREN'S BICYCLES WITH TWO OR MORE WHEELS
- CHILDRENS BICYCLES WITH TRAINING WHEELS

EXCLUSIONS:

- ANY REGISTERED VEHICLES (E.G. MOPEDS)

- CHILDREN RIDING TOYS SUCH AS TRICYCLES AND SCOOTERS
- CHILDREN WHO ARE IN A SEAT OR TRAILER ON A BICYCLE
- RIDING ON A STATIONARY EXERCISE BICYCLE

RECORD NUMBER \_\_\_\_\_

Q.46. How many electrically assisted bicycles in working order are in your household?

DEFINITION: An adult or children's vehicle of two or more wheels and pedals with an electric motor. Excludes registered vehicles and motorised devices that do not have pedals such as mobility scooters.

RECORD NUMBER \_\_\_\_\_